

# ALTA CITY NORTH

# RETAIL FOR LEASE

17732 15th Avenue NE ♦ Shoreline, WA 98155

New mixed-use apartment complex coming soon to the city for Shoreline with 228 residential units. The available retail spaces range from 775 SF to 3,250 SF, providing a wide variety of potential uses. The city of Shoreline is growing rapidly with a pipeline of over 12,000 units either built or planned for future housing development in the area. Potential tenants here will be able to capture a wide variety of customers and density. Ready for TI in Q1 2025.



Tiffini Connell

Avery Connell

Jennifer Israel

(206) 283-5212

[www.wccommercialrealty.com](http://www.wccommercialrealty.com)

# WCCR

West Coast Commercial Realty



DISCLAIMER: The above information has been secured from sources believed to be reliable, however, no representations are made to its accuracy. Prospective tenants or buyers should consult their professional advisors and conduct their own independent investigation. Site plan and configuration are subject to change. Properties are subject to change in price and/or availability without notice. West Coast Commercial Realty, LLC

# ALTA CITY NORTH

# RETAIL FOR LEASE

17732 15th Avenue NE ♦ Shoreline, WA 98155

NORTH RETAIL-  
3,250 SF Available



## Site Plan

SOUTH RETAIL-  
775 SF Available

Tiffini Connell

Avery Connell

Jennifer Israel

(206) 283-5212

[www.wccommercialrealty.com](http://www.wccommercialrealty.com)

# WCCR

West Coast Commercial Realty



DISCLAIMER: The above information has been secured from sources believed to be reliable, however, no representations are made to its accuracy. Prospective tenants or buyers should consult their professional advisors and conduct their own independent investigation. Site plan and configuration are subject to change. Properties are subject to change in price and/or availability without notice. West Coast Commercial Realty, LLC

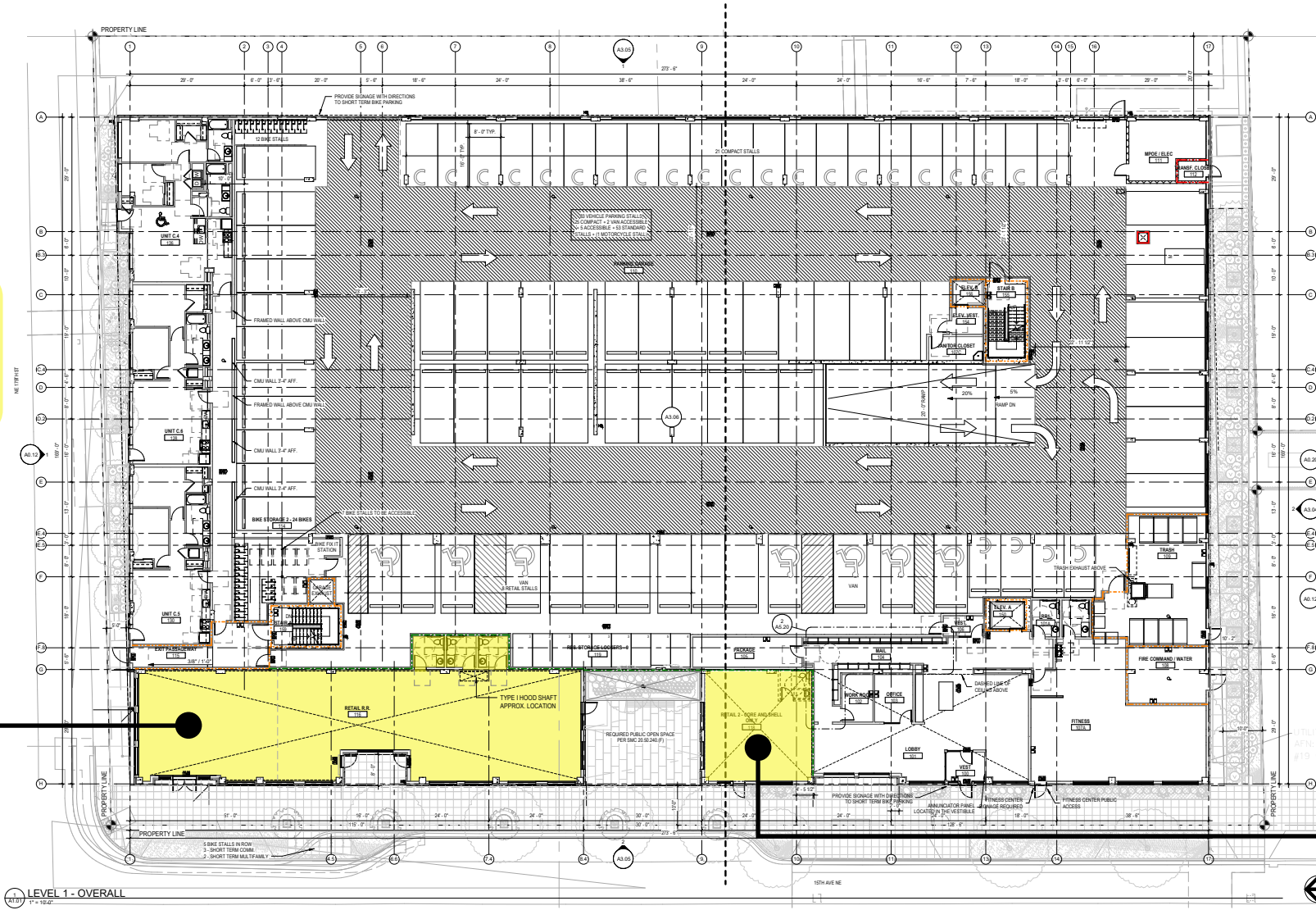
# ALTA CITY NORTH

# RETAIL FOR LEASE

17732 15th Avenue NE ♦ Shoreline, WA 98155

**NORTH RETAIL  
3,250 SF  
Available**

**SOUTH RETAIL  
775 SF  
Available**



Tiffini Connell | Avery Connell | Jennifer Israel

(206) 283-5212  
www.wcccommercialrealty.com

# WCCR

West Coast Commercial Realty



**DISCLAIMER:** The above information has been secured from sources believed to be reliable, however, no representations are made to its accuracy. Prospective tenants or buyers should consult their professional advisors and conduct their own independent investigation. Site plan and configuration are subject to change. Properties are subject to change in price and/or availability without notice. West Coast Commercial Realty, LLC

# ALTA CITY NORTH

# RETAIL FOR LEASE

17732 15th Avenue NE ♦ Shoreline, WA 98155



Tiffini Connell

Avery Connell

Jennifer Israel

(206) 283-5212

[www.wccommercialrealty.com](http://www.wccommercialrealty.com)

# WCCR

West Coast Commercial Realty



DISCLAIMER: The above information has been secured from sources believed to be reliable, however, no representations are made to its accuracy. Prospective tenants or buyers should consult their professional advisors and conduct their own independent investigation. Site plan and configuration are subject to change. Properties are subject to change in price and/or availability without notice. West Coast Commercial Realty, LLC

# ALTA CITY NORTH

# RETAIL FOR LEASE

17732 15th Avenue NE ♦ Shoreline, WA 98155



Tiffini Connell | Avery Connell | Jennifer Israel

(206) 283-5212  
[www.wccommercialrealty.com](http://www.wccommercialrealty.com)

# WCCR

West Coast Commercial Realty



DISCLAIMER: The above information has been secured from sources believed to be reliable, however, no representations are made to its accuracy. Prospective tenants or buyers should consult their professional advisors and conduct their own independent investigation. Site plan and configuration are subject to change. Properties are subject to change in price and/or availability without notice. West Coast Commercial Realty, LLC

# ALTA CITY NORTH

# RETAIL FOR LEASE

17732 15th Avenue NE ♦ Shoreline, WA 98155



## DEMOGRAPHICS

### TOTAL POPULATION

1-Mile: 15,898  
3-Mile: 63,135  
5-Mile: 339,931

### AVERAGE HOUSEHOLD INCOME

1-Mile: \$134,729  
3-Mile: \$123,531  
5-Mile: \$125,605

## TRAFFIC COUNTS

17,337  
vehicles per day at  
15th Ave NE and NE 179th St S

15,052  
vehicles per day at  
15th Ave NE and NE 177th St S

18,122  
vehicles per day at  
15th Ave NE and NE 177th St N

Tiffini Connell

Avery Connell

Jennifer Israel

(206) 283-5212

[www.wcccommercialrealty.com](http://www.wcccommercialrealty.com)

# WCCR

West Coast Commercial Realty



DISCLAIMER: The above information has been secured from sources believed to be reliable, however, no representations are made to its accuracy. Prospective tenants or buyers should consult their professional advisors and conduct their own independent investigation. Site plan and configuration are subject to change. Properties are subject to change in price and/or availability without notice. West Coast Commercial Realty, LLC