

THE LINE

RETAIL FOR LEASE

132 NE 145th Street,
Shoreline, WA 98155

Your Next Stop Is Here

— 1,866 SF Of Prime Ground Floor Retail



CBA ICSC CoStar
POWERBROKER

Tiffini Connell | Avery Connell (206) 283-5212
www.wccommercialrealty.com

WCCR

West Coast Commercial Realty

DISCLAIMER: The above information has been secured from sources believed to be reliable, however, no representations are made to its accuracy. Prospective tenants or buyers should consult their professional advisors and conduct their own independent investigation. Site plan and configuration are subject to change. Properties are subject to change in price and/or availability without notice. West Coast Commercial Realty, LLC

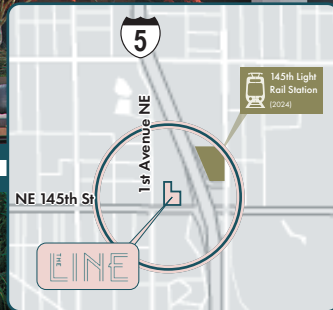


RETAIL FOR LEASE

132 NE 145th Street | Shoreline WA 98155

Coming soon to this fast-growing prime corridor in Shoreline— The LINE, an elevated 241 unit mixed use apartment building located near the new light rail station at 145th St, across the street from Lakeside High School and Middle School, and surrounded by new transit-orientated upscale residential. The LINE will offer Shoreline residents a grand seven-story home, savvy amenities, and 1,866 SF of prominent ground floor retail, all with the promise of future light-rail connectivity at the 145th Street Station, connecting Shoreline to Seattle and beyond for work and play.

We are seeking a local, specialized market and cafe concept to serve as an amenity to both the residents and surrounding community. Join over 6,278 units either already built or planned in the immediate area.



CBA ICSC CoStar POWERBROKER

Tiffini Connell | Avery Connell (206) 283-5212
www.wccommercialrealty.com

WCCR

West Coast Commercial Realty

DISCLAIMER: The above information has been secured from sources believed to be reliable, however, no representations are made to its accuracy. Prospective tenants or buyers should consult their professional advisors and conduct their own independent investigation. Site plan and configuration are subject to change. Properties are subject to change in price and/or availability without notice. West Coast Commercial Realty, LLC



NEW DEVELOPMENT

Select Projects
Recently Completed /
Under Development



The LINE

The LINE	241 units
Zinnia	299 units
Towns on 145th	81 units
Convergence	550 units
5 Degrees	70 Units

Shoreline North / 185th St Station

Axis	412 units
Kinect	240 units

Aurora Corridor - North

Canopy	476 units
Modera	399 units
Ion Town Center	215 units
Shoreline 192	250 units
Geo	164 units
Evolve	121 units
Midvale by Vintage	210 Units

Aurora Corridor - South

The Current	330 units
Summerhill	258 units

Shoreline - North City

Trad	124 units
The Postmark	243 units

12,555 units

Pipeline of future housing development
in the City of Shoreline

THE LINE



Tiffini Connell | Avery Connell (206) 283-5212
www.wccommercialrealty.com

WCCR

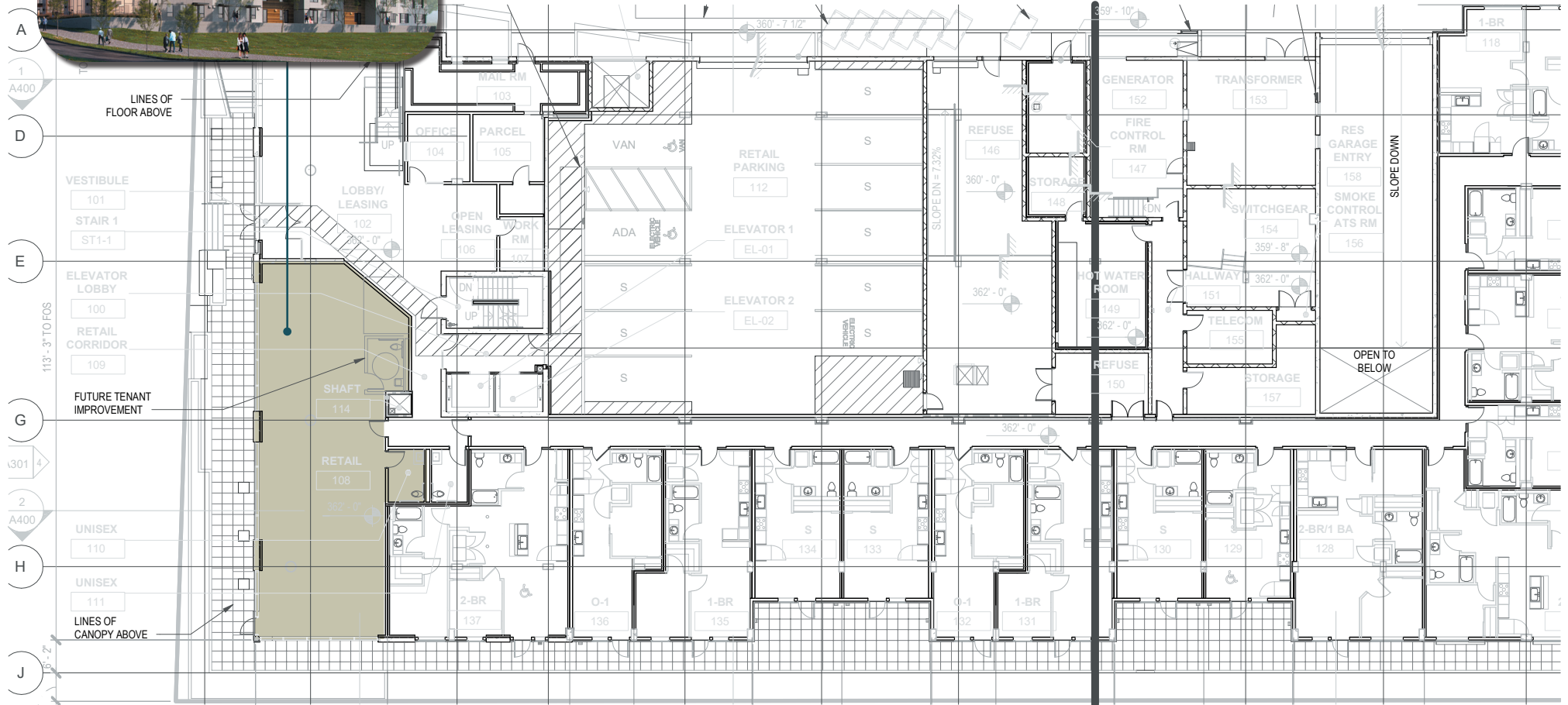
West Coast Commercial Realty

DISCLAIMER: The above information has been secured from sources believed to be reliable, however, no representations are made to its accuracy. Prospective tenants or buyers should consult their professional advisors and conduct their own independent investigation. Site plan and configuration are subject to change. Properties are subject to change in price and/or availability without notice. West Coast Commercial Realty, LLC



1,866 SF Available
with a +/- 700 SF patio area

Floor Plan



RETAIL FOR LEASE

132 NE 145th Street | Shoreline WA 98155

DEMOGRAPHICS



AVERAGE HOUSEHOLD INCOME

1-Mile: \$111,480

2-Mile: \$102,684

5-Mile: \$131,605



TOTAL POPULATION

1-Mile: 19,214

2-Mile: 83,515

5-Mile: 375,569



876 Students (5th-12th grade)

111 faculty members
in the immediate area



THE LINE



Tiffini Connell | Avery Connell (206) 283-5212
www.wccommercialrealty.com

WCCR

West Coast Commercial Realty

DISCLAIMER: The above information has been secured from sources believed to be reliable, however, no representations are made to its accuracy. Prospective tenants or buyers should consult their professional advisors and conduct their own independent investigation. Site plan and configuration are subject to change. Properties are subject to change in price and/or availability without notice. West Coast Commercial Realty, LLC